

Orkney
BOATS



DAY ANGLER

24



DAY ANGLER 24

FISHING BOATS

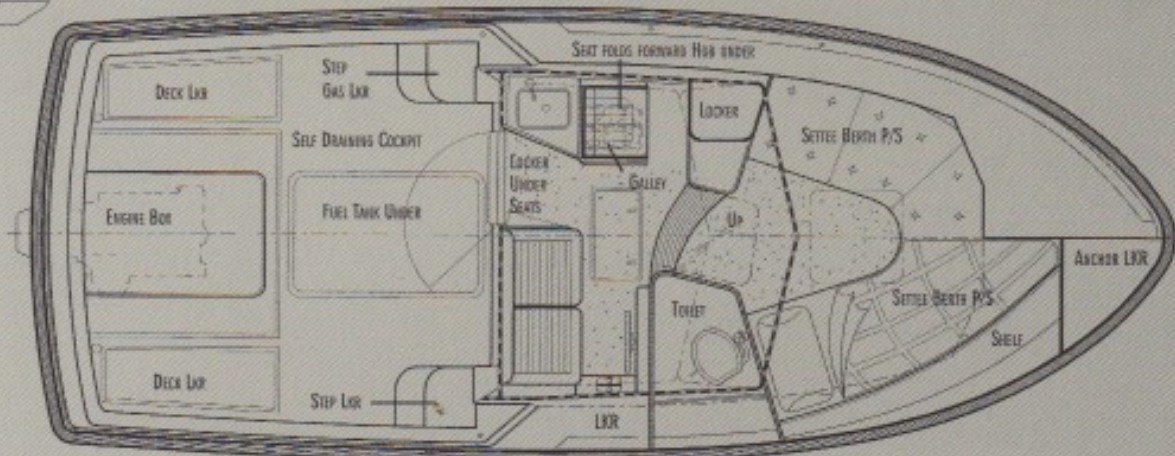
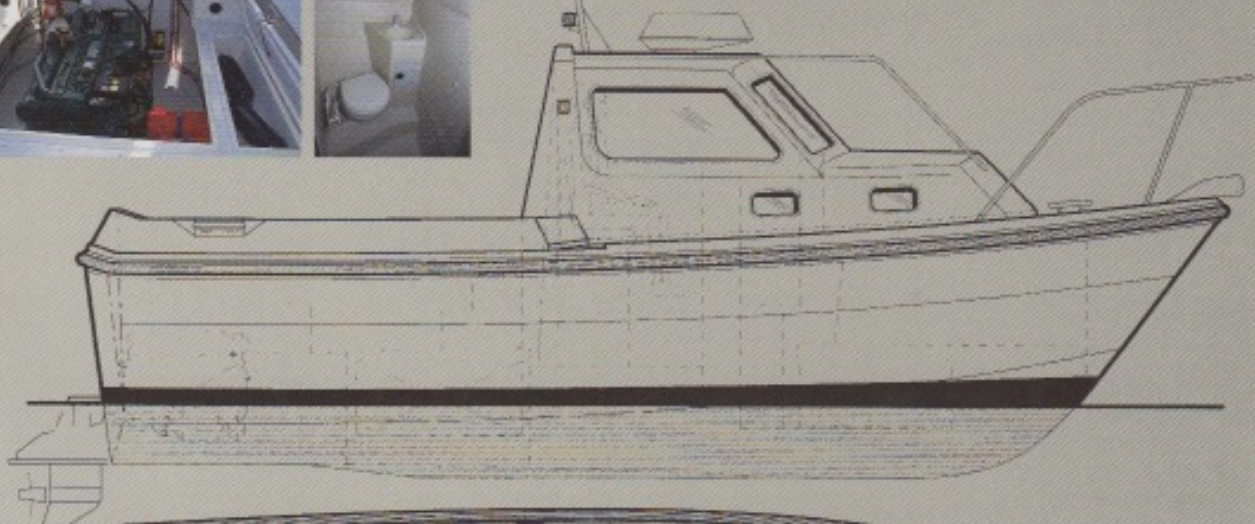
MORE THAN JUST BOATS TO FISH FROM

ORKNEY

DAY ANGLER 24

SPECIFICATION

LOA	23'6"	7.16 m
BEAM	9'2"	2.80 m
WEIGHT WITH SINGLE ENGINE	2.5 TONS APPROX	2540 KG
ENGINE OPTIONS	SINGLE OR TWIN DIESEL STERNDRIVE	
MAXIMUM POWER	200HP SINGLE STERNDRIVE INSTALLATION 210HP TWIN STERNDRIVE INSTALLATION	
MAXIMUM SPEED	27 KNOTS	
OPTIMUM SPEED	17 KNOTS	
PERFORMANCE INDICATOR	150HP	21 KNOTS
	170HP	25 KNOTS
	200HP	27 KNOTS



Some information may be subject to change and we reserve the right to alter the specifications and prices as necessary. All boats are built and/or supplied subject to our Terms of Business. A copy of our Terms of Business is available on request. All weights, measurements and performance indicators are approximate. Drawings and illustrations may show boats fitted with optional equipment. E & OE

Orkney Boats Ltd, Unit 1, Ford Lane Business Park,
Ford, Arundel, West Sussex BN18 0UZ
Telephone: 01243 551456 Fax: 01243 551914
www.orkneyboatsltd.co.uk